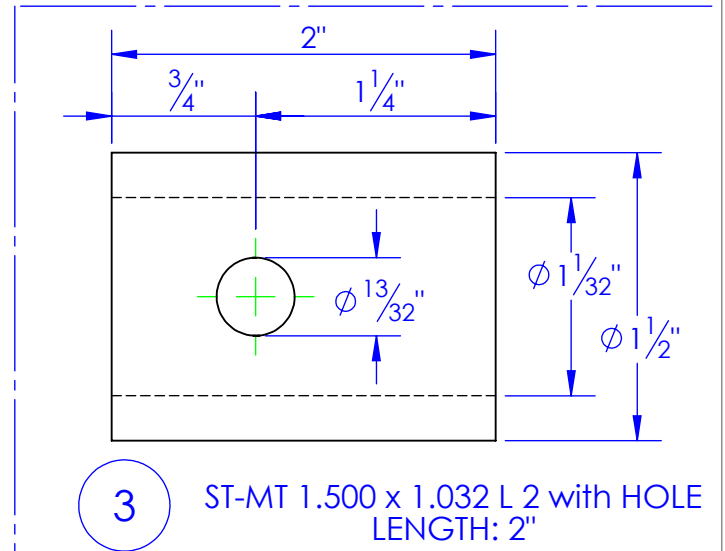
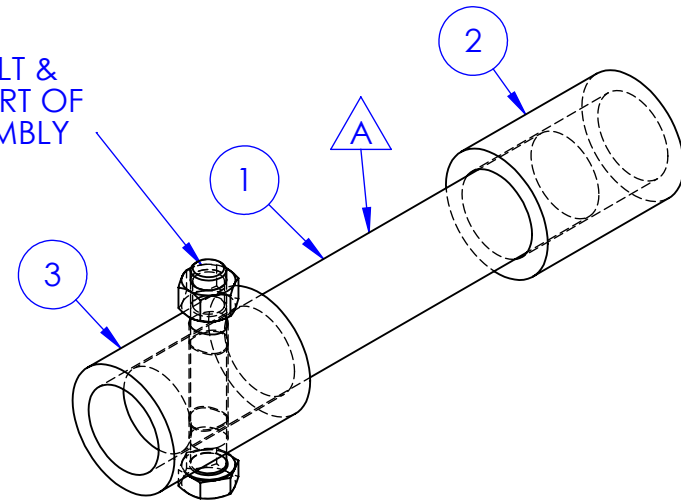
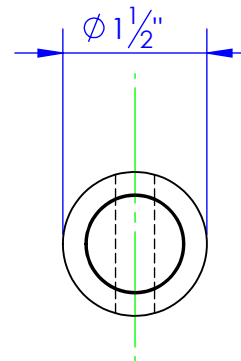
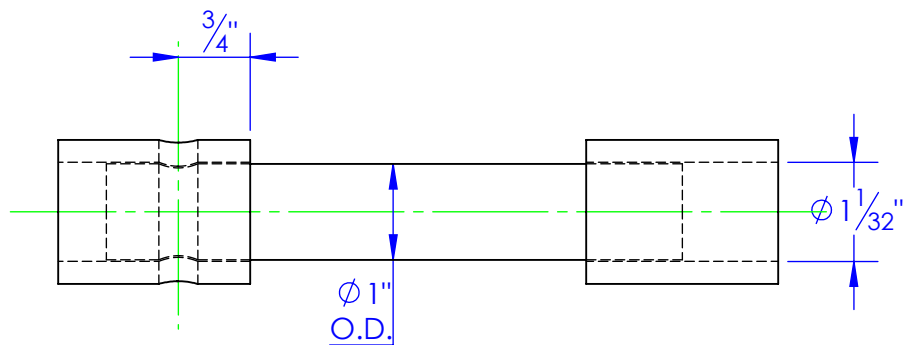
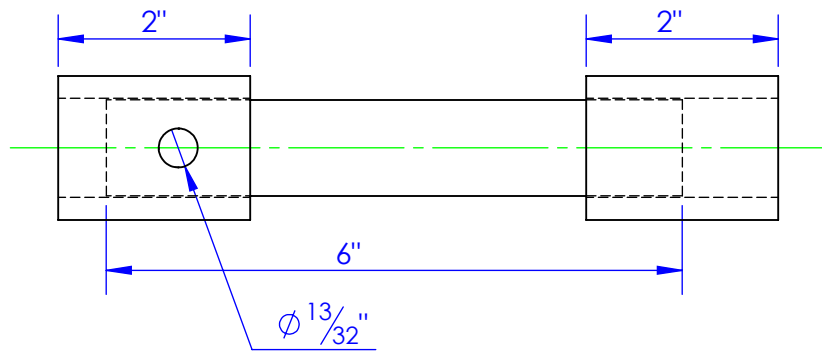


ITEM NO.	PART NUMBER	DESCRIPTION	DRAWING #	QTY.
1	RE-PN-1X601	PIN, HINGE, MAIN, HYDRA BED	10-1701	1
2	ST-MT 1.500 x 1.032 L 2	LENGTH: 2"	STOCK	1
3	ST-MT 1.500 x 1.032 L 2 with HOLE	LENGTH: 2"	STOCK	1

REV.	REVISIONS	DATE	APPROVED
A	DESCRIPTION UPDATED TO NEW STANDARD PRINT FROM KPR-400	5/2/2012	

3/8x2-1/2 HEX BOLT &
NYLOK NUT ARE PART OF
RE-PN-1x601 ASSEMBLY



PROPRIETARY AND CONFIDENTIAL
THE INFORMATION CONTAINED IN THIS
DRAWING IS THE SOLE PROPERTY OF TRIPLE
C INC. ANY REPRODUCTION IN PART OR
AS A WHOLE WITHOUT THE WRITTEN
PERMISSION OF TRIPLE C INC. IS PROHIBITED.

DIMENSIONS ARE IN INCHES TOLERANCES: FRACTIONAL $\pm 1/16$ ANGULAR: MACH ± 1 BEND \pm TWO PLACE DECIMAL ± 010 THREE PLACE DECIMAL ± 005	
MATERIAL	--
DO NOT SCALE DRAWING	

NAME	DATE
DRAWN HEATH	5/2/2012
PART # RE-KPR-400	
ASM #	
COMMENTS: KIT, PLATE REPAIR HYDRA-BED	

P.O. BOX 248,
SABETHA, KS 66534

TRIPLE C
INC.

SIZE A	DWG. NO. 10-1709	REV. A
SCALE: 1:2	WEIGHT: 2.33	SHEET 1 OF 1